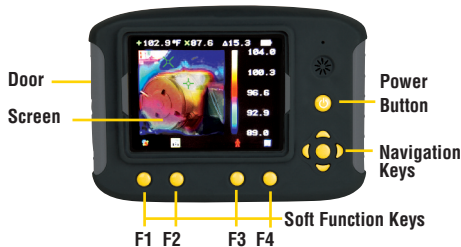


## Quick Start Guide HeatSeeker™ Thermal Imager



### Getting started

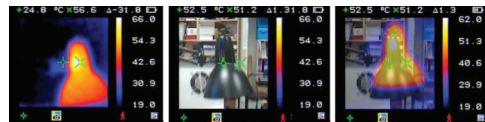
1. Unpack the camera and remove the lens cap.
2. Press the **Power** switch and allow the camera to calibrate itself. During this 15-second time period, the **screen** may blank out before the thermal image appears.
3. Check the battery icon on the screen and charge unit if necessary. The charging port is located inside the camera flap. A full charge takes about 3.5 hours and provides 6 hours of continuous use with the LED flashlight on.
4. At this point, the camera should be ready for use with the following defaults: Units of Measure: °F and Ft.; Images are focused and aligned at 6' from camera lens; Image is blended at 50%; Auto tracking with dual cursors is On; Voice/Text annotation is On;

Ambient temperature is set at 72°F; Emissivity is set for 0.95; Auto Power Off is set for 20min.

5. To customize the camera from any of the defaults, please see the Customizing the Camera Setup section further in this guide.



6. Point the camera at the object of interest, noting that the camera is focused/aligned at 6'. Ensure your fingers do not obscure the small visual lens.
7. The dual cursors automatically locate the hottest and coldest temperatures and displays these temperatures at the top of the screen along with the  $\Delta$  temperature.
8. To change the % image blend, hit the right/left **navigation keys**. Note that the % refers to the amount of visual image shown. If these keys are not working,



a) 100% Thermal Only

b) 100% Visible Only

c) 50% Thermal & 50% visible

then press the **F2** key, until **Visible Off** appears. Then, use the **center nav key** to toggle the feature On. Then, use the right/left keys to adjust the image blend.

9. To freeze the image, press the **F3** key. If unsatisfied with the image, press **F3** again to release the image and enter the active measuring mode again. Press **F3** to freeze another image.
10. For on-the-job troubleshooting, such as manually moving the cursor to a specific location on the camera's screen to obtain a specific temperature reading, refer to the full user's manual saved on the CD.
11. To save the image to the Micro-SD card, press the **Capture button** on the top of the camera. Then, record a voice tag and/or text caption to identify the file when retrieving it in the software. If these steps are skipped, the image is still saved but with a generic file name.
12. The camera then returns to live imaging and is ready to capture a new image.
13. The camera can be turned off by depressing the **power button** until the camera shuts down. The camera stores and uses the last settings upon the next startup.

The **F4** key can be used to enter the menu to change settings and view saved images onscreen. Refer to the operating manual to learn the camera's full capabilities.



## Viewing Captured Images

Captured photos can be viewed on the display or downloaded to a computer for analysis and report generation.

The camera can show a thermal image or a visible image of the scene, or a mixed blend of both. Temperature data is available on all images, even 100% visible image.

## Downloading Images:

1. The images can be downloaded directly from the camera using the USB cable or by removing the Micro-SD card from the camera and using a suitable card reader.
2. **Ensure to use Windows Explorer** to copy the complete folders from the SD card to the PC. Do not use the automatic pop-up wizards to transfer files as they will not copy all files in the image folder: .BMP for the thermal/visual image, .IR2 for the temperature data, and .WMV for the voice recording.
3. Refer to the software manual on the CD for analyzing, editing, and creating reports.

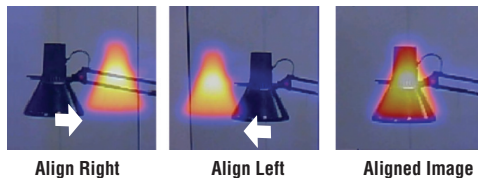
## Customizing the camera setup

### Focusing the thermal image:

1. Determine how far the object to be measured is from the camera lens.
2. Rotate the black ring around the **thermal lens** until the distance meter that appears on the screen shows the proper distance. The optimal range is 1.5' to 15', with a max of 30'.

### Aligning the visual/thermal images:

1. Press the **F2** key until **Visible On/Off** appears on the screen. The center navigation key toggles this feature on and off.
2. Press the **F1** key until **Align Image** is displayed.
3. Press the **center nav key** and note the distance meter that appears on the screen.
4. Press this **center nav key** repeatedly until the preset distance (1.5/3/6/12 ft) appears that most closely matches the distance to which the thermal image was focused.



5. Use the **left/right nav arrows** to make finer alignment adjustments. Note that these nav arrows move the visual image that is behind the thermal image.

### Turning on the LED flashlight:

Press the **F2** key until **Light Off** appears. Press the center navigation key to toggle the light on and off.

### Selecting Menu Options:

1. Press the **F4** key to enter the camera's menu. Refer to the figure below for a view of main options.
2. Use the **up/down nav keys** to highlight a setting.
4. Use the **left/right nav keys** to change a setting.
5. Use the **F4** key to exit the menu and save the changes.

